

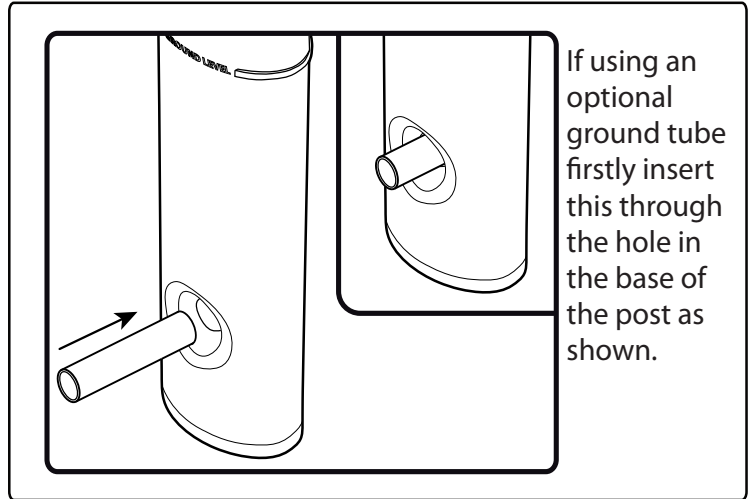
EDGEMASTER 20 INSTALLATION INSTRUCTIONS

For the majority of applications we recommend installing the Edgemaster by backfilling and for applications where extra stability is required we recommend using the Ground Tube. However for areas where soil quality is particularly poor the Edgemaster can be installed using a dry concrete mix, please see overleaf for instructions.

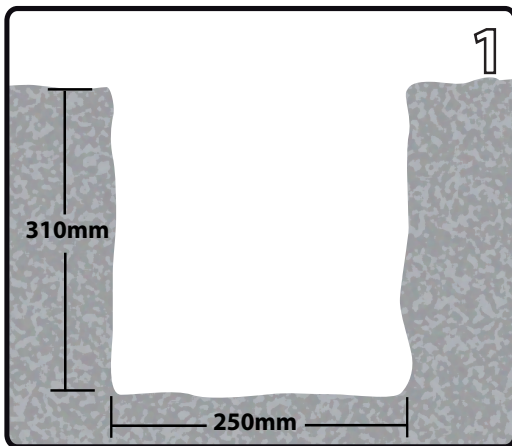
EQUIPMENT REQUIRED (BACK FILL):

- Spade
- Spirit Level

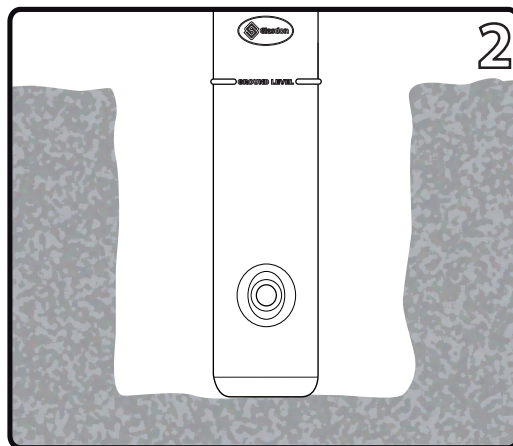
Please note that diagrams are not to scale



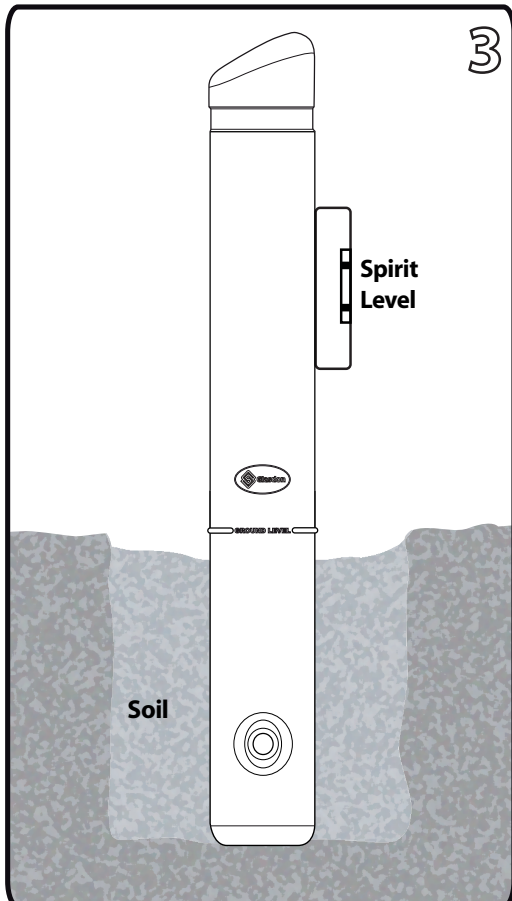
BACK FILL INSTRUCTIONS



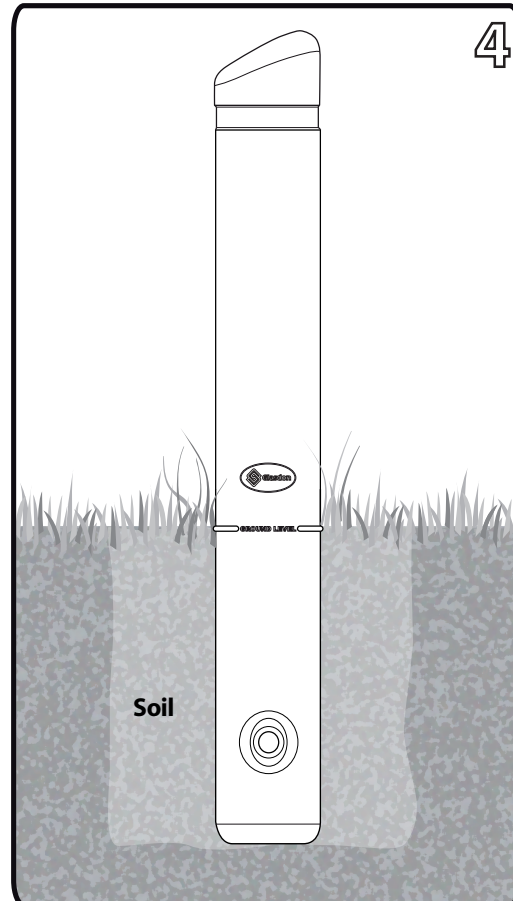
Remove any top dressing (turf etc) if required and dig a hole to a depth of 310mm and a diameter of approx. 250mm.



Tamp the marker in place (remove/refill soil as required to ensure the ground level mark is at the correct height).



Backfill the hole with soil ensuring the marker is vertically level using a spirit level.



If required replace the turf/ bark/ top dressing as appropriate.

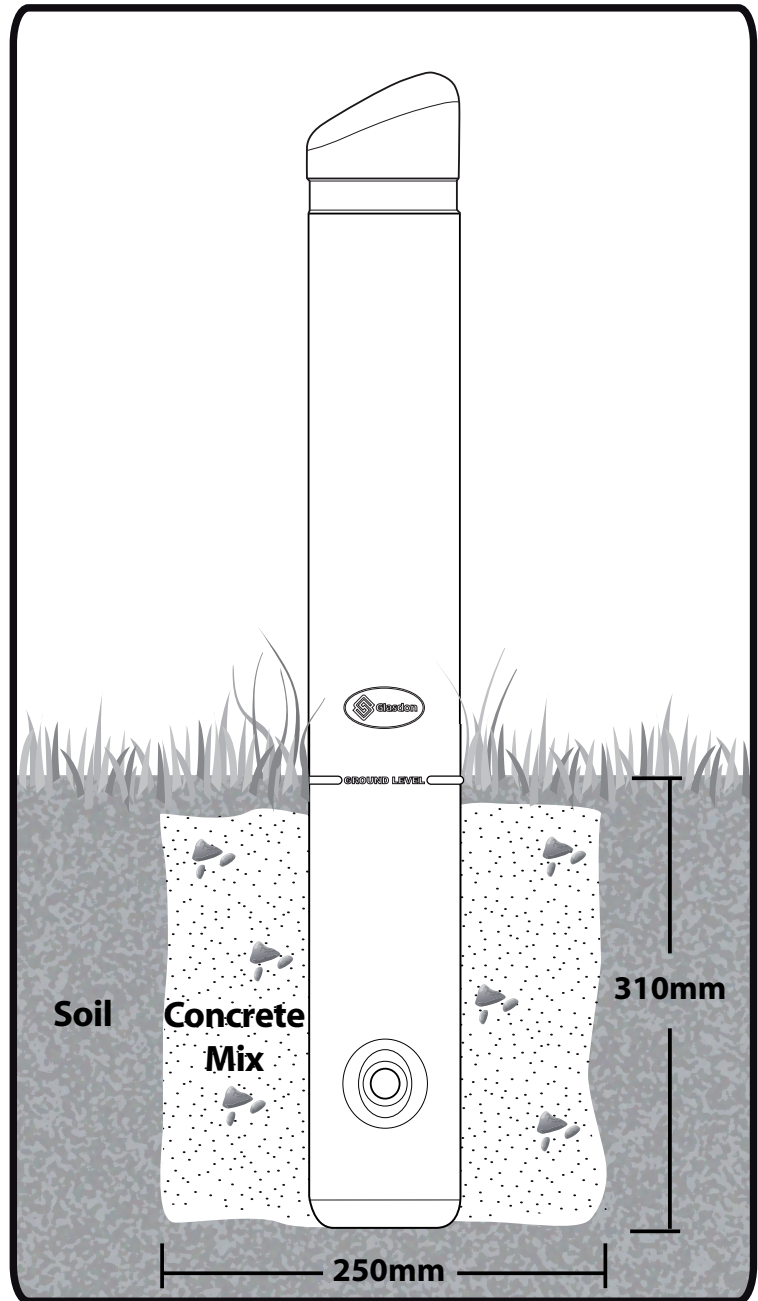
CONCRETE INSTRUCTIONS

EQUIPMENT REQUIRED:

- Spade
- Spirit Level
- Concrete Mix (we would strongly recommend using a dry mix concrete as a wet concrete may cause the post to rise when drying).

Please note that diagrams are not to scale

Follow the same instructions for Backfilling however at Step 3 refill the hole using a concrete mix and allow the concrete to set before replacing any top dressing.



IMPORTANT NOTE: PLEASE ENSURE THAT ALL RELEVANT PERSONNEL READ THE POINTS LISTED WITHIN THIS LEAFLET AND THAT A COPY IS GIVEN TO STAFF INVOLVED WITH THE INSTALLATION AND MAINTENANCE OF THIS PRODUCT.

SAFETY NOTE: PLEASE REFER TO 'THE MANUAL HANDLING OPERATIONS REGULATIONS 1992' DURING HANDLING.



AND EDGEMASTER ARE TRADEMARKS OR REGISTERED TRADEMARKS OF GLASDON GROUP OR ITS SUBSIDIARIES IN THE U.K AND OTHER COUNTRIES

- A planned maintenance schedule or regular inspection is recommended, replacing components as necessary.
- Replacement components are available direct from GLASDON.
- GLASDON cannot be held responsible for claims arising from incorrect installation, unauthorised modifications or misuse of the product.

Issue 1 June 2008 Stock no. C000/0338
© Copyright 200

Glasdon UK Ltd reserve the right to alter specifications without prior notice.



Glasdon U.K Limited

Preston New Road
BLACKPOOL
Lancashire FY4 4UL
Tel: 01253 600410
Fax: 01253 792558
email: sales@glasdon-uk.co.uk
web: www.glasdon.com